



**£595,000**

**Hackney Road**

London, E2 6QL

SELECTION OF 1, 2, 3 BEDROOM APARTMENTS RANGING FROM £595,000

Regents View, Bethnal Green – Where East London Living Meets Modern Elegance

Welcome to Regents View, an exclusive residential development in the heart of Bethnal Green, offering a vibrant lifestyle surrounded by the best of East London. Perfectly positioned just moments from Victoria Park and Regent's Canal, Regents View combines stylish contemporary living with the charm and character of one of London's most dynamic neighbourhoods.

About the Development

Regents View presents a collection of thoughtfully designed 1, 2 and 3-bedroom apartments, each finished to a high specification. Large windows flood the interiors with natural light, while private balconies or terraces offer tranquil outdoor space with views across East London's ever-changing skyline.

Each home includes:

- Open-plan living areas with engineered wood flooring
- Modern kitchens with integrated appliances
- Elegant bathrooms with premium fixtures
- Ample storage and fitted wardrobes
- Secure entry systems
- Lift access and cycle storage

Selected units also include access to a landscaped communal courtyard and on-site residents' gym.

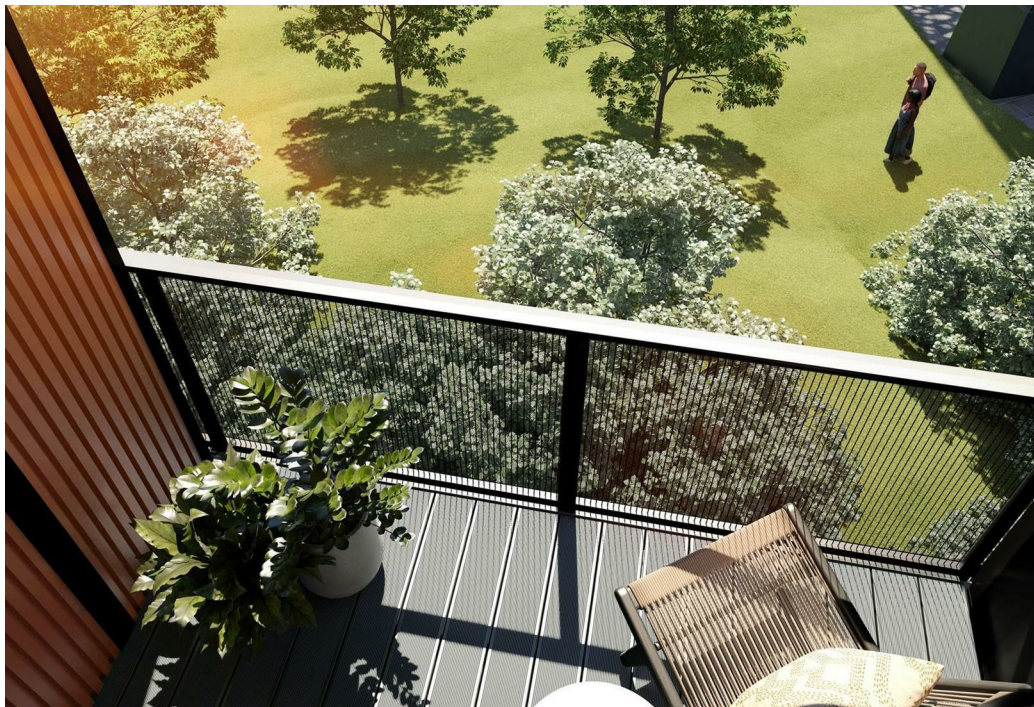
Lifestyle & Amenities


At Regents View, you're surrounded by amenities that elevate everyday living. Within walking distance, residents will enjoy:

- Independent cafés, artisan bakeries, and renowned restaurants such as Brawn, E Pellicci, and The Marksman
- Broadway Market and Columbia Road Flower Market for weekend browsing
- A range of gyms, yoga studios, and co-working spaces
- Close proximity to Queen Mary University of London

The development also benefits from nearby green spaces like Bethnal Green Gardens, Weavers Fields, and the expansive Victoria Park, ideal for running, cycling, or a relaxing stroll by the water.





Energy Efficiency Rating		
	Current	Potential
<i>Very energy efficient - lower running costs</i>		
(92 plus) <b>A</b>		
(81-91) <b>B</b>		
(69-80) <b>C</b>		
(55-68) <b>D</b>		
(39-54) <b>E</b>		
(21-38) <b>F</b>		
(1-20) <b>G</b>		
<i>Not energy efficient - higher running costs</i>		
<b>England &amp; Wales</b>	EU Directive 2002/91/EC	

Agents Note: Whilst every care has been taken to prepare these particulars, they are for guidance purposes only. All measurements are approximate and are for general guidance purposes only and whilst every care has been taken to ensure their accuracy, they should not be relied upon and potential buyers/tenants are advised to recheck the measurements

**OFFICE ADDRESS**

88 Cheshire Street  
London  
E2 6EH

**OFFICE DETAILS**

0207 739 6969  
info@peachproperties.com  
www.peachproperties.com